



Eigenfrequency Analysis of Railway Vehicle Leafsprings Suspension: A Finite Element Analysis

Yusril Irwan^{1,*}, A. Ali¹, Uum Sumirat^{2,3}, Doni Fajar Ramadhan^{2,3}, Mumu Komaro²

¹ Teknik Mesin, Institut Teknologi Nasional, Bandung, Indonesia

² Departemen Pendidikan Teknik Mesin, Universitas Pendidikan Indonesia, Bandung, Indonesia

³ Teknik Mesin, Universitas Sangga Buana, Bandung, Indonesia

ARTICLE INFO

Article history:

Received 26 April 2024

Received in revised form 21 June 2024

Accepted 4 July 2024

Available online 30 July 2024

Keywords:

Eigenfrequency; Finite element method;
Leaf springs; Railway vehicle

ABSTRACT

The Vehicle system in general is very concerned with the comfort and safety of the driver. One of the determining criteria for vehicle safety is the use of a good suspension system. The vehicle suspension system is investigated in this work is a railway car which is a modification of the TATA ACE EX-2 pickup vehicle. Based on the modification of pickup vehicles, the trajectory of pickup vehicle specifications varies, so it is necessary to pay attention before and after modification, as well as high vibrations. In this study, the researcher used manual mathematical calculations and the finite element method with his SOLIDWORKS software to perform a quantitative analysis of leaf spring suspension systems for track-finding vehicles. Based on the results of vibration testing conducted, it is known that the frequency that occurs is 4.27 Hz, but the simulation results show that the frequency of the front leaf springs is 199.67 Hz, 351.18 Hz, 356.91 Hz, 648, and 57 Hz. This shows that it varies between 739.42 is hertz. The rear leaf spring frequencies are 206.83 Hz, 286.4 Hz, 346.05 Hz, 636.33 Hz, and 715.68 Hz. This means that no destructive resonance occurs in the leaf springs.

1. Introduction

The transportation system in general is very concerned about the comfort and safety of the rider. That is the main reasons why many reports on this matter published [1-9]. One that supports this is the application of a good suspension system, the suspension system functions to absorb surprises, vibrations, swings, and shocks received by vehicles when crossing bumpy, hole, and uneven roads [10]. The suspension system itself consists of spring components and damping components located between the body and the wheels [11]. The spring components in the suspension system have relatively low stiffness compared to normal rigidity, making it possible to accept the force imposed on them according to a certain level [12]. The main function of the spring components in the suspension system is to provide a reflection value due to the load received to provide comfort [13].

* Corresponding author.

E-mail address: yusril@itenas.ac.id

<https://doi.org/10.37934/aram.122.1.4453>

The suspension system of the vehicle studied in this study is a railroad patrol vehicle which is the result of a modification of the TATA type ACE EX-2 pick-up vehicle. The suspension system on the car is a leaf spring suspension. Based on the modification of the pick-up vehicle, it is necessary to conduct a study because of differences in the trajectory of the pick-up vehicle specifications before being modified, and after being modified to cross the railroad tracks which results in high vibrations.

Vehicle vibration on the rails is affected by several factors, such as wear between the wheels and the rails, the magnitude of the error in the distance between the rails, and the degree of deviation of the curvature of the rails [14]. Sources of vibration for vehicles on rails include Disturbances in superstructures such as Wessels, rail joints, and rail crossings; The unevenness of the rail track which is influenced by the geographical environment; Discontinuities in the track: significant gradients, bends, or changes in track direction; wear of rails and wheel bandages which increase vibration towards the horizontal [15]; Increased rail bending which causes vibration in the vertical direction [16]. Vibration on the rail that creates a continuous dynamic force on the leaf spring suspension system and causes fatigue [17]. If the frequency acting on the structure is equal to the eigenfrequency of the structure then the structure will experience stronger vibrations and can result in Damage [18]. Based on the existing gaps, the researcher will analyze the failure analysis as a result of the eigenfrequency of the construction of the leaf spring suspension system on the lane monitoring vehicle.

2. Methodology

In this study, the simulation analysis of the finite element method uses the SOLIDWORKS 2021 software. Simulation and modeling are carried out to make it easier to make circuit designs, minimize the risk of failure when experiments are carried out, and minimize the estimated costs required to carry out experiments [19]. Finite element method simulation analysis procedures include Preparing the software, creating a 3D model of a leaf spring system, entering material properties in the 3D model of a leaf spring system, The process of entering the style load, meshing process of the 3D model of leaf spring system, finite element method simulation running process and Analysis of the results in the form of mode shapes from eigenfrequency in leaf spring construction.

In this study, the simulation analysis of the finite element method uses the SOLIDWORKS 2021 software. Simulation and modeling are carried out to make it easier to make designs, minimize the risk of failure when experiments are carried out, and minimize the estimated costs required to carry out experiments [19]. Finite element method simulation analysis procedures include Preparing the software, creating a 3-D model of a leaf spring system, entering material properties in the 3D model of a leaf spring system, input force (load), meshing process of 3D model of leaf spring system, finite element method simulation running process and Analysis of the results in the form of mode shapes from eigenfrequency in leaf spring construction. The analysis process using the Solidworks finite element method in this study is shown in Figure 1.

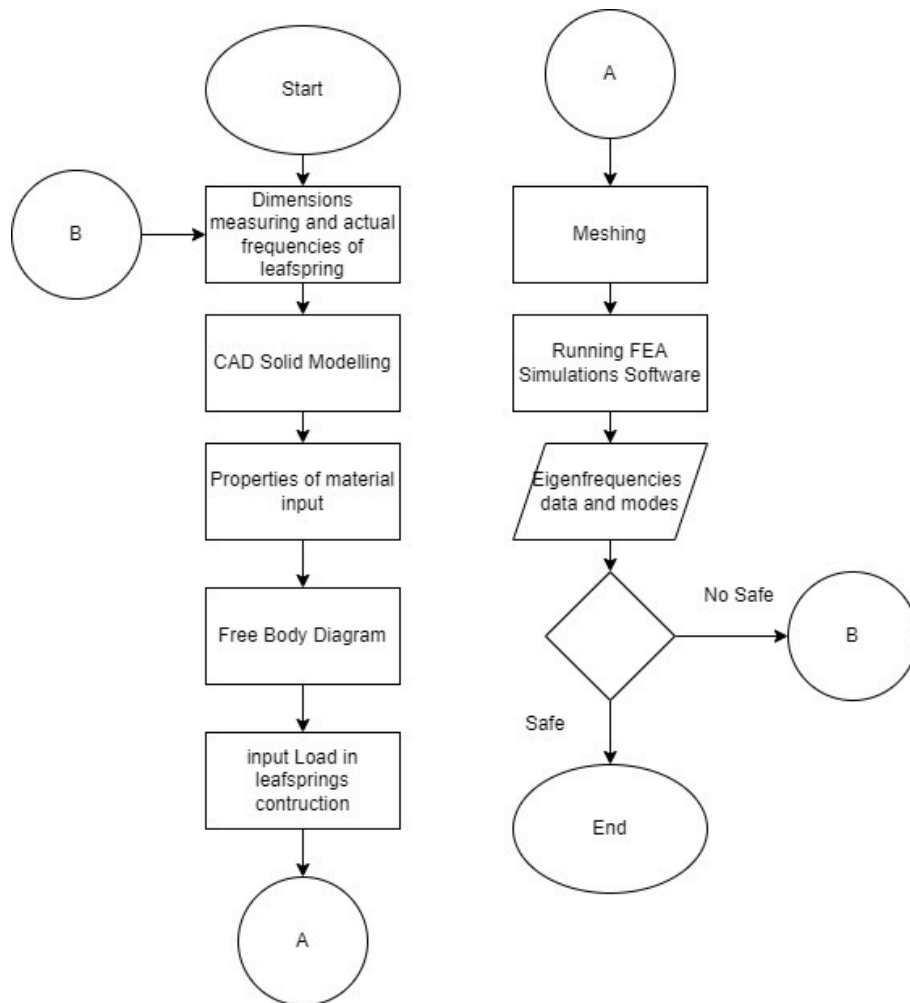


Fig. 1. Finite element method calculation flowchart

3. Results

3.1 Measurement Dimensions and Material Properties

Based on the measurement results on leaf springs, the data shown in Table 1 is obtained.

Table 1

Measurement results pring leaf

	Front Leaf spring	Rear Leaf springs
Thickness(t)	7 mm	7 mm
Length(L)	83 cm	83 cm
Number of layers (n)	2	3

Based on the results of dimensional measurements, it is found that:

- i. The mass of the vehicle on the front axle (m_F): 785 kg
- ii. The mass of the vehicle on the rear axle (m_R): 562 kg
- iii. Wheelbase length (l): 2110 mm
- iv. Vehicle mass (kg): 1546 kg
- v. Force On Front Wheels (F_{zf}): 450.66 kgf
- vi. Force On Rear Wheels (F_{zr}): 322.34 kgf
- vii. The frequency that occurs (Hz): 4.27 Hz

Based on the results of the spectrometer and mechanical testing of the material on the leaf spring, the chemical composition data is shown in Table 2.

Table 2

Element spring material composition leaf

Elements (%)					
C	Si	M N	P	S	Fe
0.505	1.58	0.787	0.0277	0.0068	Balance

Based on this composition, the material complies with EN 46 (Silicone-manganese spring steel) with the following mechanical characteristics: Yield Stress (1092.23 MPa), Ultimate Stress (1340.57 Mpa) Elongation (8.07 %), Hardness (414.5 HV).

3.2 Calculating Front EigenFrequency Leafspring Simulation

When viewed from the side, the distribution of force received by the spring and position Leaf springs and shock absorbers on the body can be seen in Figures 2 and Figure 3.



Fig. 2. The position of the leaf spring and the free body diagram on the spring

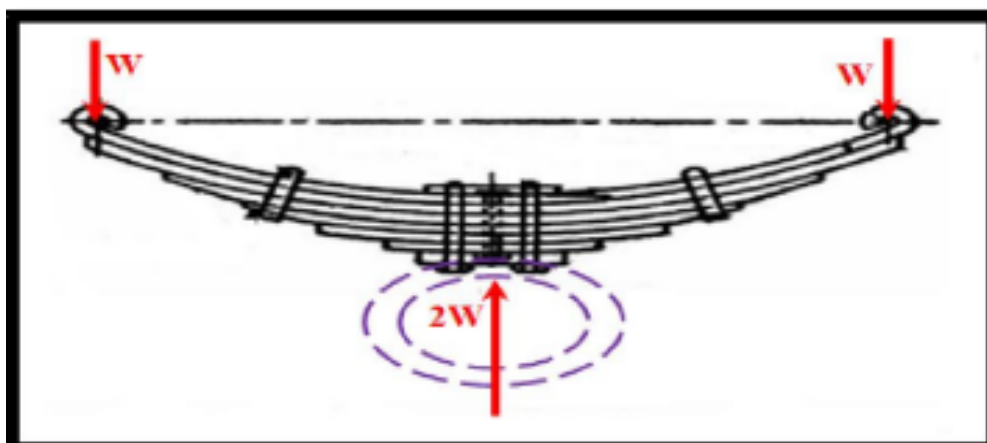


Fig. 3. Illustration for the position of the leaf spring and the free body diagram on the spring

Leaf Spring Suspension Leaf springs are mounted above the rear axle and leaf springs are mounted below the rear axle as shown in Figure 4. Most leaf springs are mounted right in the middle of the length of the spring so that the front and rear are the same length.



Fig. 4. The position of the leaf spring wheel seen from the side

In heavy vehicles such as trucks and buses, leaf springs experience a pressure difference between empty and fully loaded. To meet the load when transporting the vehicle. At the end of the longest plate springs are formed for installation. Meanwhile, the back of the top steel plate is connected to the frame using a swing that can move freely when the length of the spring varies due to the influence of changes in the load.

After measuring the frequency that occurs in the vehicle by conducting vibration testing, an eigenfrequency simulation is carried out. Leaf Spring modeling for solid work calculations can be seen in Figure 5.

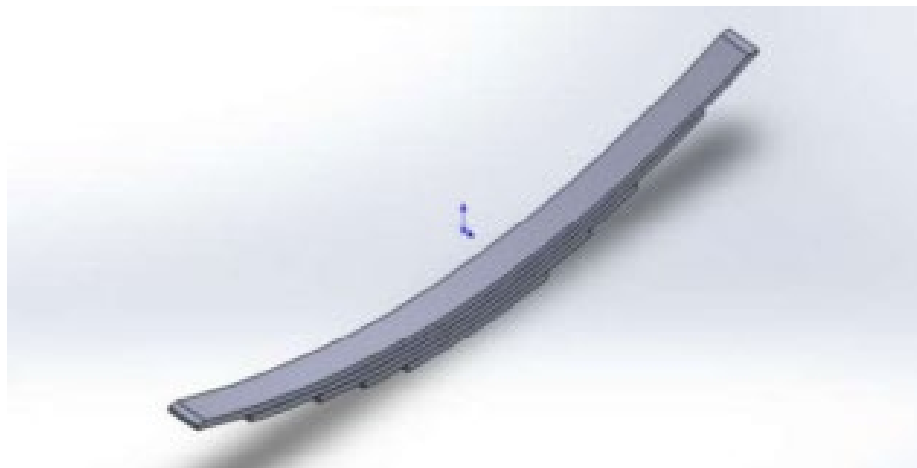


Fig. 5. Geometry modeling.

4. Discussion

4.1 Calculation Front EigenFrequency Leafspring Simulation

If the frequency value that occurs is the same as the frequency value in the eigenfrequency simulation (natural frequency), a resonance will occur which will damage the leaf spring.

Eigenfrequency simulation is carried out using 5 types of forms (modes) of eigenfrequency as shown in Figure 6. Then, the results are in Figure 7 and Table 3.

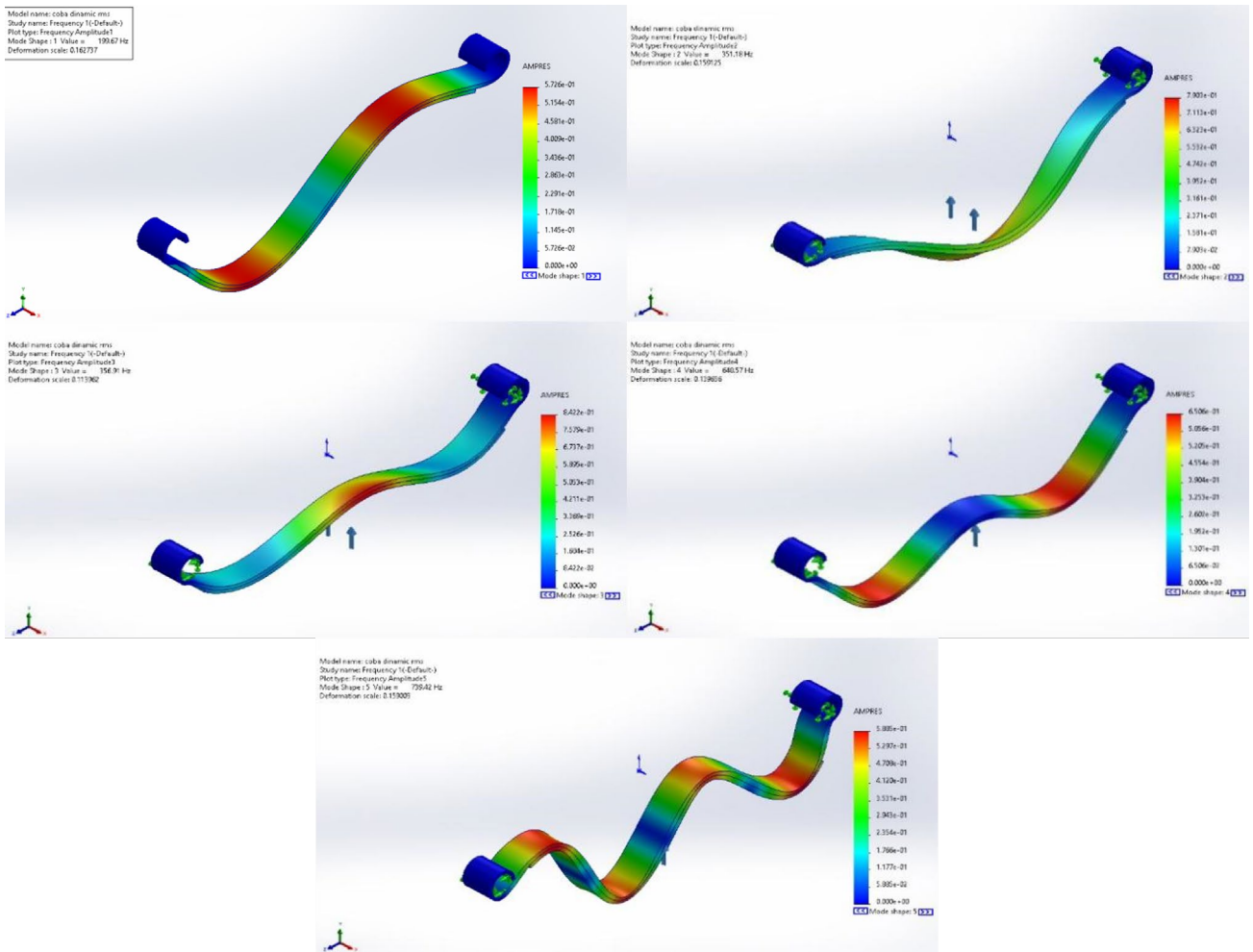


Fig. 6. Spring Eigenfrequency simulation front leaf

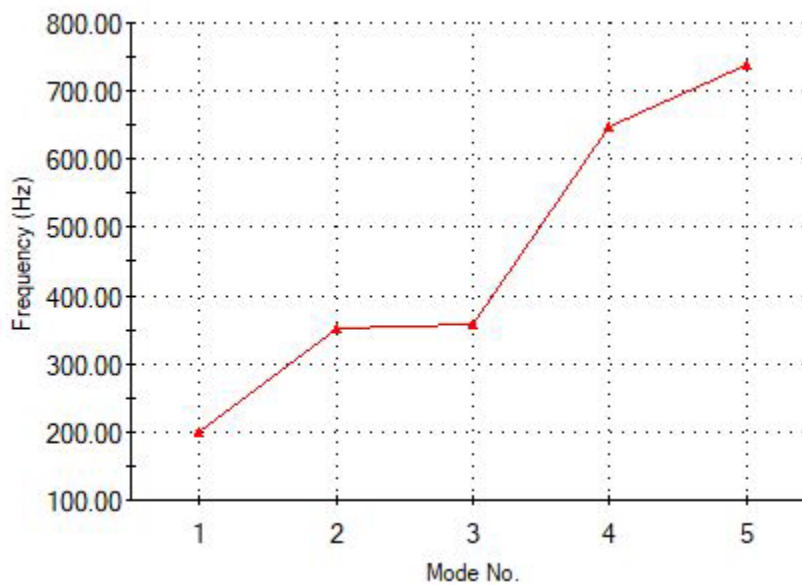


Fig. 7. Spring Eigenfrequency simulation results front leaf

Table 3
 Spring Eigenfrequency simulation results front leaf

Frequency Number	rad/sec	Hertz	Seconds
1	1,254.6	199.67	0.0050083
2	2,206.6	351.18	0.0028475
3	2,242.5	356.91	0.0028018
4	4,075.1	648.57	0.0015419
5	4,645.9	739.42	0.0013524

Based on the results of the vibration tests carried out, it is known that the frequency that occurs is 4.27 Hz, while the simulation results show that the frequency of the leaf springs is 199.67, 351.18, 356.91, 648.57, and 739.42 Hz. This indicates that no destructive resonance will occur in the front leaf springs.

4.2 Calculation Rear EigenFrequency Leafspring Simulation

After measuring the frequency that occurs in the vehicle by conducting vibration testing, an eigenfrequency simulation is carried out. If the frequency value that occurs is the same as the frequency value in the eigenfrequency simulation (natural frequency), a resonance will occur which will damage the leaf spring. Eigenfrequency simulation is carried out using 5 types of forms (modes) of eigenfrequency (Figures 8 and Figure 9; Table 4).

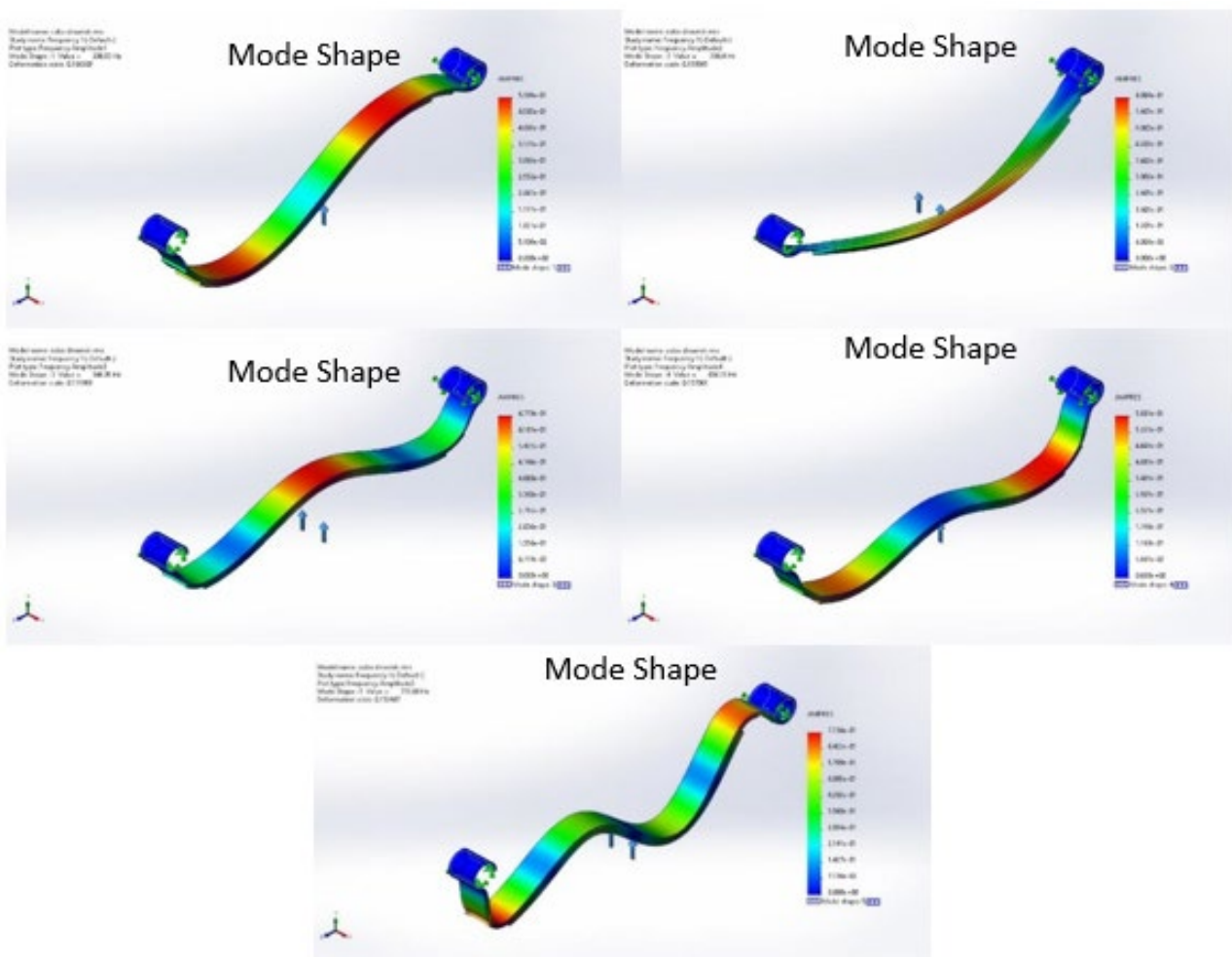


Fig. 8. Spring Eigenfrequency simulation back leaf

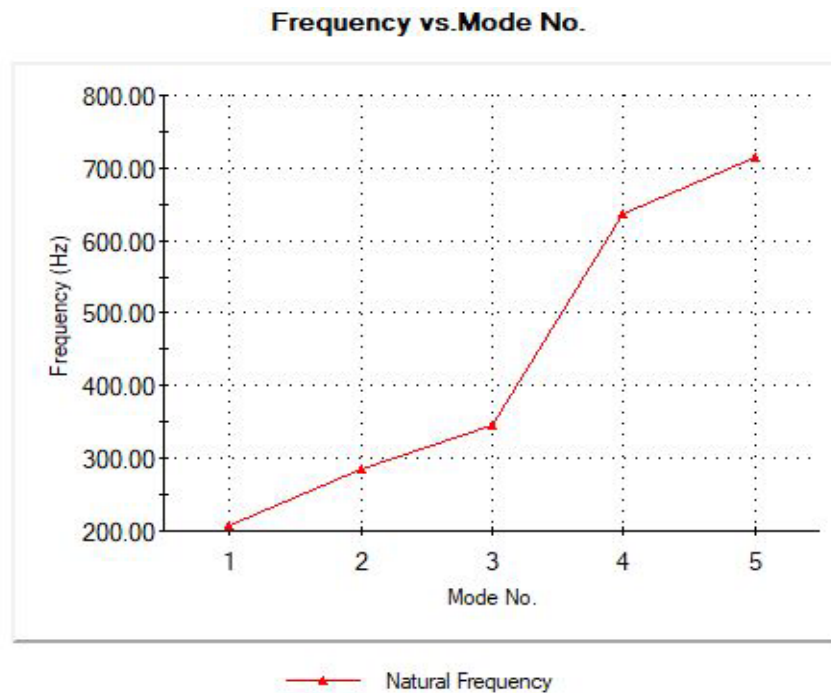


Fig. 9. Spring Eigenfrequency simulation results rear leaf.

Table 4
 Spring Eigenfrequency simulation results back leaf

Frequency Number	Rad/sec	Hertz	Seconds
1	1,299.5	206.83	0.004835
2	1,799.5	286.4	0.0034916
3	2,174.3	346.05	0.0028897
4	3,998.2	636.33	0.0015715
5	4,496.7	715.68	0.0013973

Based on the results of vibration testing conducted, it is known that the frequency that occurs is 4.27 Hz, while the simulation results show that the frequency of the leaf springs is 206.83, 286.4, 346.05, 636.33, and 715.68 Hz. This indicates that no destructive resonance will occur in the front leaf springs.

To evaluate the dynamic conditions of a component or system efficiently, the vibration mode analysis uses the properties of the eigenvalues and eigenvectors. By using Solidworks, capital analysis can be calculated through numerical simulations. This numerical simulation was carried out to identify the personal frequency and mode shape of the leaf springs.

Because the leaf spring is a continuous system it can have infinite mode forms, but in this study only consider the first 5 mode forms. Table 4 the results of the modal analysis performed using Solidworks for the first mode to the fifth mode are shown. The result of the value of the natural frequency of the spring leaves for the initial mode to the next mode, namely 206.83, 286.40, 346.05, 636.33, and 715.68 Hz.

In the rear leaf spring, there is a percentage increase between the second and third vibration modes, here it has a small increase by calculating using Eq. (1).

$$\Delta_{23} = \frac{\omega_3 - \omega_2}{\omega_2} \times 100\% = \frac{346.05 - 286.40}{286.40} \times 100\% = 20.82\% \quad (1)$$

While on the front leaf spring occurs using Eq. (2).

$$\Delta_{23} = \frac{\omega_3 - \omega_2}{\omega_2} \times 100\% = \frac{356.91 - 351.18}{351.18} \times 100\% = 1.63\% \quad (2)$$

For the case of the rear leaf spring, the natural frequency value of each vibration mode varies, which will produce a different reaction. The magnitude of the frequency can be caused by the influence of material, position, defects, and other factors causing an increase in natural frequency, an increase in the frequency of 290.28 Hz, in the third to fourth order vibration mode. Each material has a different mode and more than one natural frequency. The smallest increase occurred between the second and third vibration modes of 20.82%.

The magnitude of the frequency can be caused by the influence of material, position, defects, and other factors causing an increase in natural frequency, an increase in the frequency of 289.66 Hz, in the third to fourth order vibration mode. Each substance has a different mode and more than one natural frequency. The smallest increase occurred between the second and third vibration modes by 1.63%. This indicates that no destructive resonance will occur in the front leaf springs.

Eigenfrequency analysis of railway vehicle leaf spring suspension using the finite element method is a reference that must be taken into account when selecting a leaf spring design to prevent failure. Analysis and monitoring of vibration conditions on engineering systems and components will also benefit from understanding the vibration patterns in a given design. Conditions and forms of vibration mode and frequency can be used as a reference point for further studies in the analysis of transient and harmonic dynamics which form the basis of vibration analysis.

5. Conclusions

Based on the results of the vibration tests carried out, the frequency that occurs is 4.27 Hz, while the simulation results show the frequency on the front leaf spring of 199.67-739.42 Hz and the frequency on the spring leaf behind of 206.83-715.68 Hz. It signifies that there is no destructive resonance that will occurs in the leaf springs.

References

- [1] Jibril, Ayuba Olaniyi, Usman Adisa Issa, and Sanusi Ramat Abidemi. "Unveiling Social Consequences: Examining Effects of Tricycle Transportation's Riders (Keke Napep) Growth from a Community Service Perspective." *ASEAN Journal of Community Service and Education* 2, no. 2 (2023): 117-126.
- [2] Al Qushai, Ihza Lisiano, Arnaz Sholeh, Wahyu Nur Budiarta, and Farid Triawan. "Motorcycle child seat for child with special needs: Its design process and problem-based learning." *Indonesian Journal of Community and Special Needs Education* 1, no. 2 (2021): 93-102. <https://doi.org/10.17509/ijcsne.v1i2.35142>.
- [3] Setiyo, Muji, Noto Widodo, Bagiyo Condro Purnomo, Suroto Munahar, Muhammad Andi Rahmawan, and Akbar Luthfi. "Harvesting cooling effect on LPG-fueled vehicles for mini cooler: A lab-scale investigation." *Indonesian Journal of Science and Technology* 4, no. 1 (2019): 39-47. <https://doi.org/10.17509/ijost.v4i1.12834>.
- [4] Eftekhari, Shahrooz, and Abdulkareem Sh Mahdi Al-Obaidi. "Investigation of a cruising fixed wing mini unmanned aerial vehicle performance optimization." *Indonesian Journal of Science and Technology* 4, no. 2 (2019): 280-293. <https://doi.org/10.17509/ijost.v4i2.18185>.
- [5] Husain, Suha S., Mina Qays Kadhim, Abdulkareem Sh Mahdi Al-Obaidi, Alaq F. Hasan, Amjad J. Humaidi, and Dwi Novia Al Husaeni. "Design of robust control for vehicle steer-by-wire system." *Indonesian Journal of Science and Technology* 8, no. 2 (2023): 197-216. <https://doi.org/10.17509/ijost.v8i2.54794>.
- [6] Bhosale, Tanmay, Ajim Attar, Prathamesh Warang, and Randhir Patil. "Object Detection for Autonomous Guided Vehicle." *ASEAN Journal of Science and Engineering* 2, no. 3 (2021): 209-216. <https://doi.org/10.17509/ajse.v2i3.39439>.
- [7] Ratsame, Priyaporn, Mojira Koedsaksit, Sompattana Jitsoontron, Unchasa Jaisamak, and Supachai Puengsungewan. "Vehicle-tracking mobile application without a GPS sensor." *Indonesian Journal of Educational Research and Technology* 1, no. 1 (2021): 11-14. <https://doi.org/10.17509/ijert.v1i1.32650>.
- [8] Koo, Taeyun, Seokil Hong, Dohwan Kim, Hyunchul Tae, Jongkwan Kim, Jongchun Won, and Hong Yong Bhae. *A study on the controllability of the vehicle steer-by-wire systems*. No. 2020-01-0646. SAE Technical Paper, 2020. <https://doi.org/10.4271/2020-01-0646>.

- [9] Aziz, Muhammad, M. U. H. A. M. M. A. D. Huda, ASEP BAYU DANI Nandiyanto, and Ade Gafar Abdullah. "Opportunity of frequency regulation using electric vehicles in Denmark." *Journal of Engineering Science and Technology* 13, no. 6 (2018): 1700-1712.
- [10] Patriawan, Desmas Arifianto, Eriek Wahyu Restu Widodo, and Isnan Hariyanto. "Pemodelan Suspensi Aktif dengan Elektromagnet untuk Menghasilkan Kenyamanan dan Manuver yang Lebih Baik Dalam Berkendara." In *Semin. Nas. Sains dan Teknol. Terap. III 2015*, pp. 219-224. 2015.
- [11] Janoko, Bayu, and Eko Prasetya Budiana. "Analisa Kegagalan Pegas Ulir Pada Bogie Tipe Nt 11 (K5) Untuk Gerbong Kereta Ekonomi (K3)." *Mekanika* 12, no. 2 (2014).
- [12] Imaduddin, Iqbal, Doni Fajar Ramadhan, and Ridwan Adam Muhamad Noor. "Effect of Voltage, Current, and Power on revolutions per minute in the brushless direct 3000-Watt current motor on E-Gokart." *ASEAN Journal of Science and Engineering* 1, no. 3 (2021): 221-228.
- [13] Liu, Xintian, Minghui Zhang, Haijie Wang, Jiao Luo, Jiachi Tong, and Xiaolan Wang. "Fatigue life analysis of automotive key parts based on improved peak-over-threshold method." *Fatigue & Fracture of Engineering Materials & Structures* 43, no. 8 (2020): 1824-1836. <https://doi.org/10.1111/ffe.13235>.
- [14] Jiang, Lizhong, Xiang Liu, Ping Xiang, and Wangbao Zhou. "Train-bridge system dynamics analysis with uncertain parameters based on new point estimate method." *Engineering Structures* 199 (2019): 109454. <https://doi.org/10.1016/j.engstruct.2019.109454>.
- [15] Dumitriu, Mădălina. "On the critical points of vertical vibration in a railway vehicle." *Archive of Mechanical Engineering* 61, no. 4 (2014): 609-625. <https://doi.org/10.2478/meceng-2014-0035>.
- [16] Tomioka, Takahiro, Tadao Takigami, and Yasufumi Suzuki. "Numerical analysis of three-dimensional flexural vibration of railway vehicle car body." *Vehicle System Dynamics* 44, no. sup1 (2006): 272-285. <https://doi.org/10.1080/00423110600871301>.
- [17] Bruni, Stefano, Jordi Vinolas, Mats Berg, Oldrich Polach, and Sebastian Stichel. "Modelling of suspension components in a rail vehicle dynamics context." *Vehicle system dynamics* 49, no. 7 (2011): 1021-1072. <https://doi.org/10.1080/00423114.2011.586430>.
- [18] Gudmundson, Peter. "Eigenfrequency changes of structures due to cracks, notches or other geometrical changes." *Journal of the Mechanics and Physics of Solids* 30, no. 5 (1982): 339-353. [https://doi.org/10.1016/0022-5096\(82\)90004-7](https://doi.org/10.1016/0022-5096(82)90004-7).
- [19] Hamidah, Ida, Doni Fajar Ramadhan, In Mustagisin, Ade Gafar Abdullah Sriyono, and Agus Solehudin. "The performance comparison between commercial automatic voltage stabilizer and programmable automatic voltage stabilizer." *Journal of Engineering Science and Technology* 15, no. 2 (2020): 1011-1017.