



Hybrid Flower Pollination Algorithm with Artificial Neural Network (FPA-ANN) Classification Model for Handwritten Character Recognition (HCR)

Muhammad Arif Mohamad^{1,*}, Zalili Musa¹, Amelia Ritahani Ismail², Raja Joko Musridho³

¹ Faculty of Computing, Universiti Malaysia Pahang Al-Sultan Abdullah, 26600 Pekan, Pahang, Malaysia

² Kulliyah of Information and Communication Technology (KICT), International Islamic University Malaysia, 53100 Kuala Lumpur, Malaysia

³ Department of Informatics Engineering, Faculty of Engineering, Universitas Pahlawan Tuanku Tambusai, Kabupaten Kampar, Riau 28412, Indonesia

ABSTRACT

This study addresses the concerns regarding the performance of Handwritten Character Recognition (HCR) systems, focusing on the classification stage. It is widely acknowledged that the development of the classification model significantly impacts the overall performance of HCR. The problems identified specifically pertain to the classification model, particularly in the context of the Artificial Neural Network (ANN) learning problem, leading to low accuracy in recognizing handwritten characters. The objective of this study is to improve and refine the ANN classification model to achieve better HCR. To achieve this goal, this study proposed a hybrid Flower Pollination Algorithm with Artificial Neural Network (FPA-ANN) classification model for HCR. The FPA is one of the metaheuristic approaches is utilized as an optimization technique to enhance the performance of ANN, particularly by optimizing the network training process of ANN. The experimentation phase involves using the National Institute of Standards and Technology (NIST) handwritten character database. Finally, the proposed FPA-ANN classification model is analysed based on generated confusion matrix and evaluated performance of the classification model in terms of precision, sensitivity, specificity, F-Score and accuracy. The results demonstrate that the hybrid FPA-ANN model achieves a 1.59 percent improvement in accuracy compared to the single ANN model.

Keywords:

Metaheuristic; Machine learning; Optimization; Flower pollination algorithm; Artificial neural network; Handwritten character recognition

1. Introduction

Handwritten Character Recognition (HCR) remains a challenging task for researchers, even after nearly four decades of continuous work in this field. Although extensive research has been conducted on HCR for over five decades, it continues to be an active and demanding area with many researchers currently involved in it [1-4]. In this study, the focus is on proposing a method for recognizing handwritten characters. In general, preprocessing, feature extraction, and classification phases are the typical components of an HCR system. Feature extraction can employ the clean character image

* Corresponding author.

E-mail address: arifmohamad@umpsa.edu.my

<https://doi.org/10.37934/araset.61.2.96106>

produced by pre-processing directly and effectively. Selecting useful and effective characteristics for the classification step during feature extraction is necessary. Image character recognition occurs at the classification stage, which is the final step. The entire process determines the system's success rate. A good survey on HCR and its stages can be found in [5-7].

The recognition of handwritten character is suggested in this study. Preprocessing, feature extraction, and classification phases are often present in an HCR system. However, the development of a classification model for handwritten characters is the only phase on which this work focuses. Implementing metaheuristic feature extraction techniques suggested by earlier research [8,9] is the first step in the process. These methods work as chain code extractors to get chain code characteristics that reflect the handwritten character pictures. The categorization model then incorporates these features as input. The flower pollination algorithm and an artificial neural network are incorporated in the suggested classification model for handwritten characters (FPA-ANN). This model is intended to efficiently identify and categorize handwritten characters.

This study contributes to enhancement of ANN classification model by optimizing the learning process of ANN with Flower Pollination Algorithm (FPA). FPA acted as an optimization approach by modifying the weights of the interconnections in satisfying the objective to minimize the error of the network in ANN. The modification defines the best weights based on the particular optimization characteristics of FPA. Summarily labelled as hybrid FPA-ANN classification model. Then, the proposed hybrid FPA-ANN is executed in classifying the handwritten character.

2. Previous Work

This paper is a continuous study of previous works on chain code extraction based on metaheuristic feature extraction algorithm [8,9]. After the thinning process is done against the character binary image, the chain code as feature representation of image character is extracted using a proposed metaheuristic feature extraction algorithm. In the development of metaheuristic feature extraction algorithm, chain code was used as feature representation technique and two metaheuristic algorithms which are Harmony Search Algorithm (HSA) [8] and Whale Optimization Algorithm (WOA) [9] were utilized. The purpose of both proposed algorithms is to find a continuous route of chain code which covers all the image character, which will be subsequently used in constructing the chain code as an image feature. At the end of the study, the proposed metaheuristic feature extraction algorithms are evaluated based on performances measurement of length and computation time. To end, the best metaheuristic feature extraction algorithm is selected as chain code feature extractor.

The Flower Pollination Algorithm (FPA) was developed by Yang [11] and it is a population-based metaheuristic optimization algorithm inspired by the evolution process of flowering plants. FPA is characterised by simplicity and flexibility in its formulation as well as high efficiency in its computational performance [12]. Furthermore, many studies show that it can outperform other well-established metaheuristic optimization algorithm [13,14]. A simple explanation of the efficiency of FPA is based on the fact that it mimics the reproduction process of flowering plants. The latter has been so successful that flower species dominate the landscape of earth [15].

Notably, it has proven to be efficacious in tackling optimization problems within diverse scientific fields [16], such as image processing [17,18], power systems [19,20], structures [21] and geotechnical engineering [22-25]. Related to geotechnical engineering, Singh *et al.*, [24] and Ocal *et al.*, [25] proposed the use of FPA to search for the location of critical sliding surfaces for slope stability analysis, while Mergos and Mantoglou [22] and Yucel *et al.*, [23] used FPA for the design of cantilever retaining walls.

3. Methodology

This section presents the general information of proposed methodology for this study that described the whole activity in this research. The methodology is demonstrated in Figure 1. It shows the detail process involve in the methodology. In HCR, input data is defined and collected so that it can be manipulated in achieving the objective. NIST databases were used in the experiment. Therefore, character image datasets that are going to be use are identified and been selected as the input source in further progression. There are five stages in the proposed methodology which are preprocessing stage, feature extraction stage, feature vector formation stage, classification stage and evaluation stage. This paper follows the methodology accordingly. The details for each stage are explained in the next section respectively.

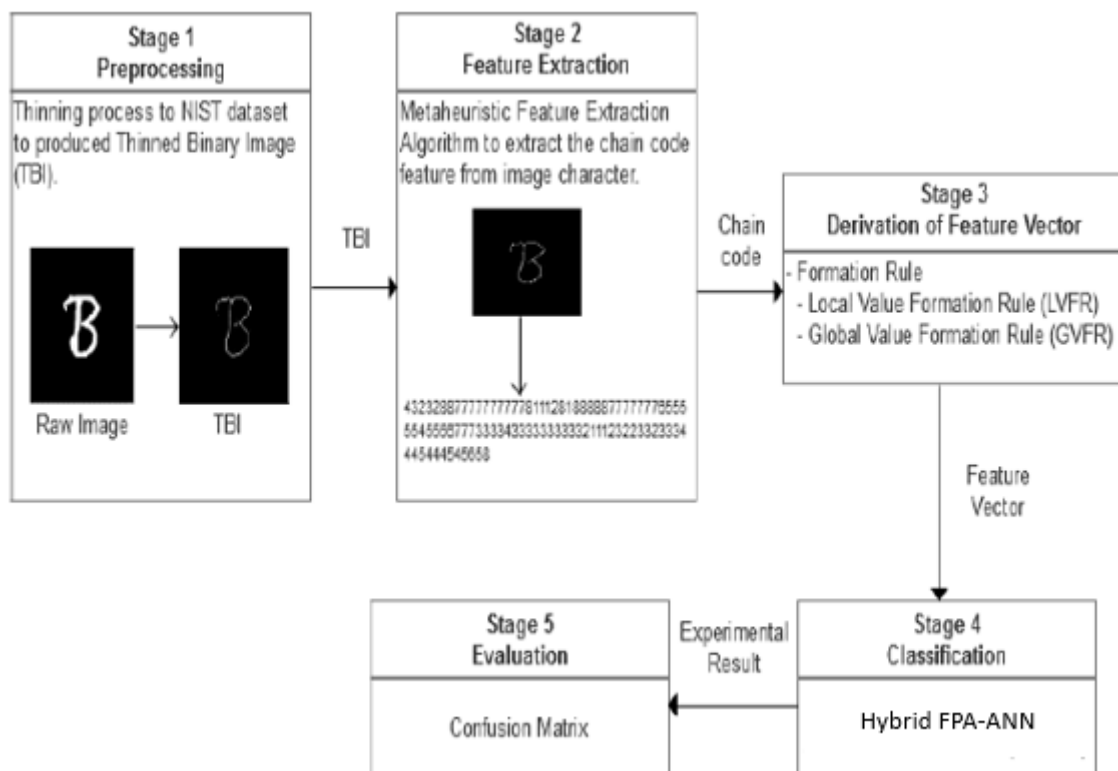


Fig. 1. The proposed methodology

3.1 Preprocessing and Feature Extraction

Thinned Binary Image (TBI) format data that are usually been used in the development of feature extraction algorithm are applied in this research. TBI was produced in the preprocessing stage by thinning process. "Bwmorph" MATLAB function is utilized for this purpose.

After the thinning process is done against character binary image, chain code as feature representation of image character is extracted using metaheuristic feature extraction algorithm. In the development of metaheuristic feature extraction algorithm, chain code is used as a feature representation technique and the two metaheuristic algorithms; HSA and WOA were applied. The purpose of both proposed algorithms is to find a continuous route of chain code which covers all the image character, which will be subsequently used in constructing the chain code as an image feature. The metaheuristic feature extraction algorithms are evaluated based on the performance

measurement of length and computation time. More details about metaheuristic feature extraction algorithm in extracting chain code of handwritten character can be referred to [8,9].

3.2 Derivation of Feature Vector

Feature vector is acted as input for the proposed FPA-ANN classification model. Feature vector was derived by proposed formation rule such as Local Value Formation Rule (LVFR) and Global Value Formation Rule (GVFR). This process produced two feature vectors: Local Feature Vector (LFV) and Local Global Feature Vector (LGFV). Details of derivation of feature vector can be referred in [10].

4. Proposed FPA-ANN

This section provides an overview of the process used to develop the proposed FPA-ANN classification model for handwritten characters. During the ANN classification model's network training phase, the FPA has been hybridized. At the start of the network training, the FPA is specifically incorporated into the ANN classification model. We developed an algorithm using Microsoft Visual Studio to implement this hybrid model.

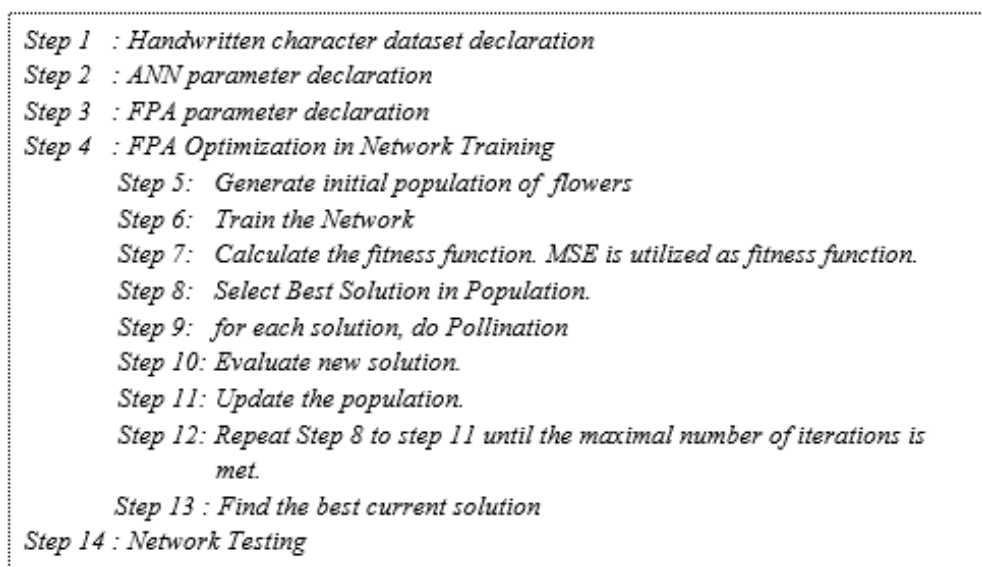


Fig. 2. The FPA-ANN classification algorithm

A dataset of handwritten characters taken from the NIST database is used for the FPA-ANN experiment. A collection of feature vectors serves as the input to the proposed FPA-ANN classification model, while the character class labels serve as the output. The architecture is specified with layers for input, hidden, and output for the ANN parameter declaration. Kolmogorov's Theorem, which recommends employing $2n+1$ nodes, where n is the number of nodes in the input layer, is used to calculate the number of nodes in the hidden layer. The definition and configuration of the ANN parameters are shown in Table 1.

Table 1
 ANN Parameter Setting

Parameters	Setting Value
Input (n)	Feature Vector (69)
Output (character class)	Class label (62)
No of hidden node	$2n+1$
Network Structure (I-H-O)	69-139-62
Network Algorithm	Feed Forward BP
Transfer Function	<i>Sigmoid</i>
Performance Function (MSE)	0.05
Learning Rate	0.50
Momentum Constant	0.95
Max Number of Epochs	10000

The third step of the proposed FPA-ANN, the FPA parameters are declared. These parameters include the number of flowers (n), pollination rate (p), and maximum number of iterations. The declaration of FPA parameter values is based on previous research [11]. Yang [11] have suggested parameter values within a specific range to reduce the time needed for trial and error while still ensuring favourable results in optimizing the algorithm. Table 2 shows the FPA parameters declaration for this study.

Table 2
 FPA Parameter Setting

Parameters	Setting Value
Number of flowers in population	100
Pollination Rate	0.9
Max number of iterations	10000

To provide a better understanding of the FPA terminology and basic processes used in this study, Table 3 presents the equivalent terminologies employed.

Table 3
 Main Terminology of FPA based on this study

Terminology of FPA	Equivalent Terminology
Flower	Weight and biases of ANN as solution vector
Population of Flower	Population of solution
Fitness Function	Means Square Error (MSE) as error of ANN Network
Best Solution	Best solution according to Fitness Function
Termination Criterion	Minimum value of MSE and maximum number of iterations
Number of iterations	Number of Epoch in ANN

Step 4 of the proposed algorithm involves using the FPA for optimization during the network training process. The network training approach used here is supervised training, with FPA employed as the optimization approach. The network training process in the FPA-ANN algorithm consists of signal propagation through each layer, starting from the input layer, passing through the hidden layer, and finally reaching the output layer. Each node in one layer is connected to every node in the subsequent layer with specific weights. The input is processed by the network, and the obtained output results are compared to the desired outputs. Based on the comparison, errors are calculated and propagated through the system to adjust the weights, which control the network's behaviour. After the training phase, the resulting map contains the winning neurons and their associated weight vectors. The weight vectors are further optimized using the FPA optimization approach. This iterative

process is repeated until the error reaches the minimum level or a maximum number of iterations (stopping conditions) are reached. The Mean Square Error (MSE) is monitored during training, and the process stops when the MSE reaches a value lower than the defined minimum error (0.05) or after a maximum number of iterations (10,000). Throughout the iterations, the algorithm records the best error convergence rate achieved, which allows for the investigation of the network's behaviour. Figure 3 provides an illustration of the FPA optimization process during the network training, covering Step 5 to Step 13 of the FPA-ANN algorithm. To design the FPA for training the network, several terms need to be highlighted and defined.

- i. The weights and biases of the network are presented as flowers in the population of FPA.
- ii. The fitness function is defined as minimum error of MSE of the network.

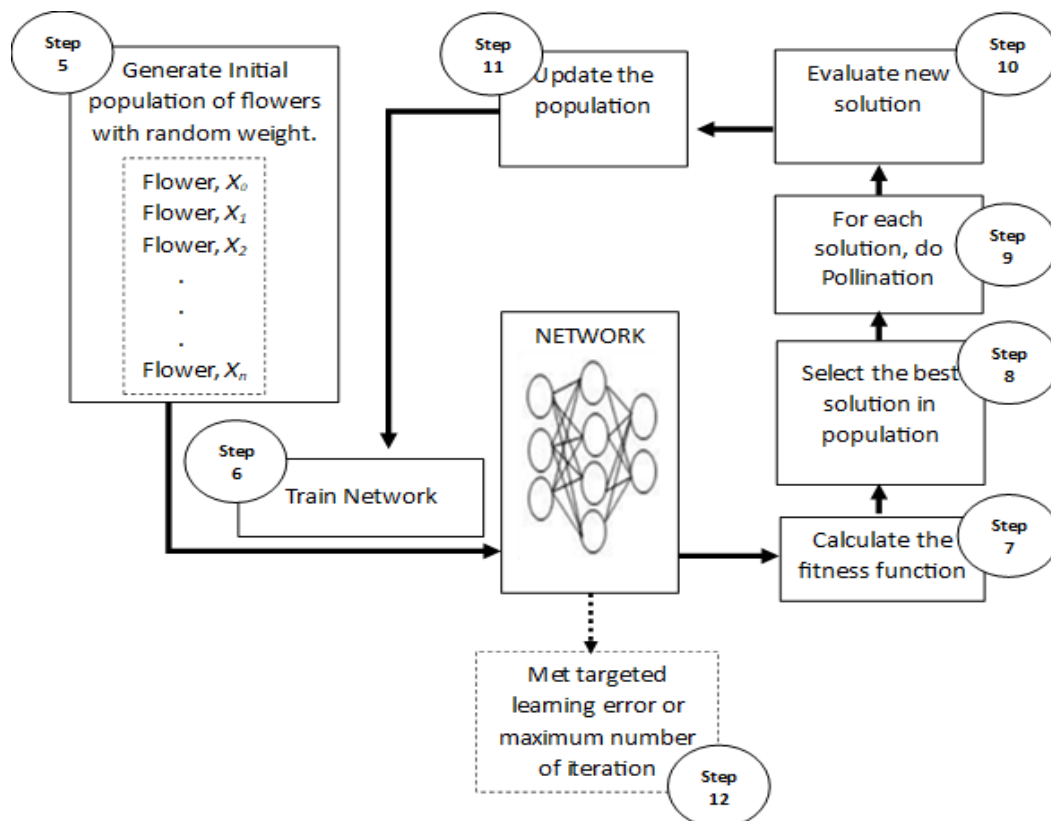


Fig. 3. Illustration of flower pollination algorithm optimization in ANN network training

5. Result Analysis and Evaluation

This section presents the analysis results of the proposed FPA-ANN classification model for handwritten characters. The performance of the FPA-ANN model in classifying the handwritten characters is evaluated, and a confusion matrix is used to gain a clear understanding of the model's findings for each character class. The confusion matrix is constructed as a 62x62 matrix to assess the model's performance on the testing dataset. In the confusion matrix, four possible outcomes are considered: True Positive (TP), True Negative (TN), False Positive (FP), and False Negative (FN). These outcomes provide insights into how well the model correctly identifies positive and negative instances for each character class.

To evaluate the proposed FPA-ANN classification model, a comparison is made with a previous single ANN classification model based on performance measurements [11]. Precision, sensitivity, and

specificity are used as performance metrics to assess the classification models' performance for handwritten characters. Precision is defined as the proportion of true positive (TP) results against all positive results (both TP and FP). It indicates how well the model correctly identifies positive instances among the predicted positive ones. Similarly, specificity measures the proportion of true negatives (TN) correctly identified, indicating how well the model recognizes negative instances. In terms of precision, sensitivity, and specificity, if the proportion is closer to 1, it means the margin of error is smaller, indicating better performance of the classification model.

The evaluation results of the proposed FPA-ANN and single ANN models in terms of precision, sensitivity, and specificity for each character are illustrated in Figure 4, Figure 5 and Figure 6 respectively. The illustrations clearly shows that the FPA-ANN model outperforms the ANN model in classifying handwritten characters, as it achieves smaller margin errors with precision and sensitivity values closer to 1 for all characters compared to the single ANN model. In terms of specificity, both classification models show similar distribution results, indicating that they successfully recognize negative or non-character instances accurately.

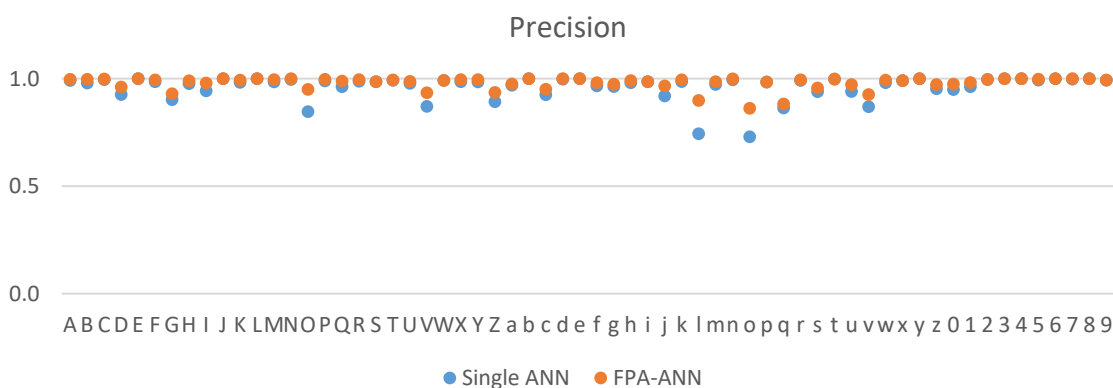


Fig. 4. Comparison of proposed FPA-ANN and single ANN in term of Precision

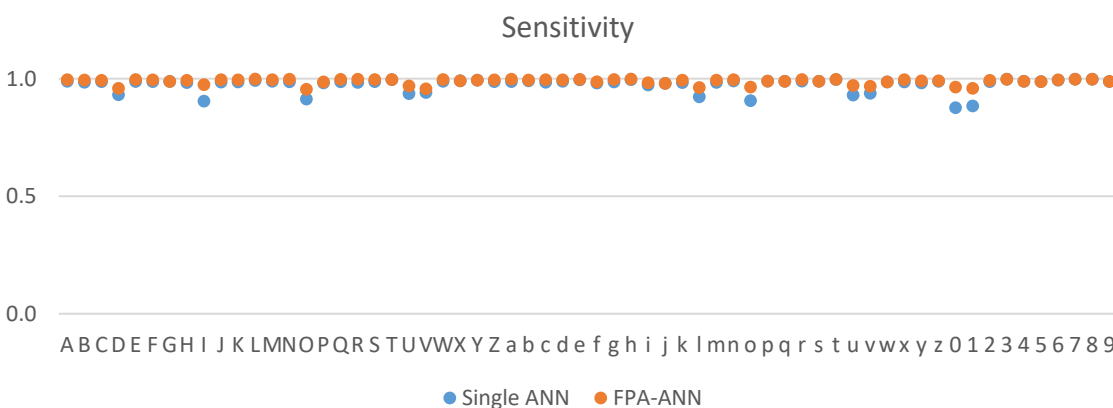


Fig. 5. Comparison of proposed FPA-ANN and single ANN in term of Sensitivity

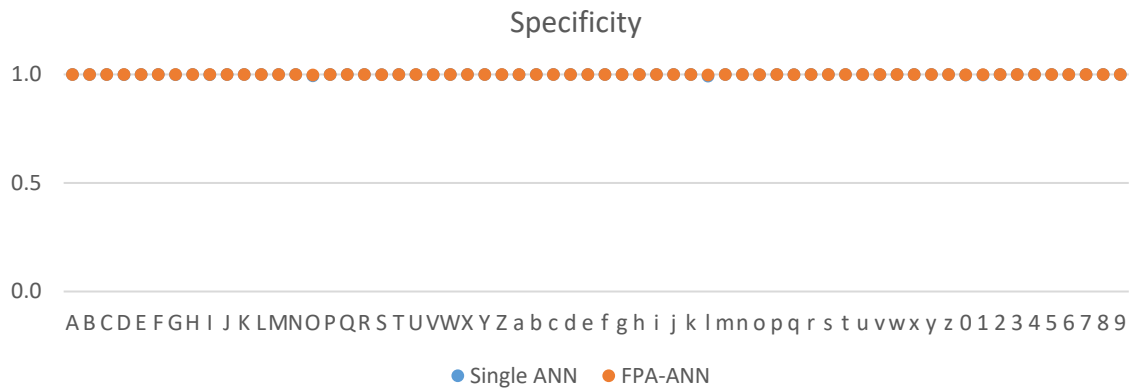


Fig. 6. Comparison of proposed FPA-ANN and single ANN in term of Specificity

The overall performances of the proposed FPA-ANN classification model for handwritten characters are summarized using common performance measurements: accuracy and error rate. The accuracy of the model represents the percentage of correctly classified instances among all instances in the dataset. A higher accuracy indicates better performance in recognizing the characters. The error rate, on the other hand, is the complement of accuracy and shows the percentage of incorrectly classified instances. Lower error rates indicate better performance. In addition to accuracy and error rate, the F-score is also utilized as a performance measurement. The F-score is the harmonic mean between precision and sensitivity, serving as a balanced measure of the model's performance. It considers both the ability to correctly identify positive instances (precision) and the ability to capture all positive instances (sensitivity) in its calculation. The F-score provides a more comprehensive evaluation of the model's capabilities. The summarized results, including accuracy, error rate, and F-score, are illustrated in Figure 7. This representation gives a clear understanding of the overall performance of the proposed FPA-ANN classification model for handwritten character recognition.

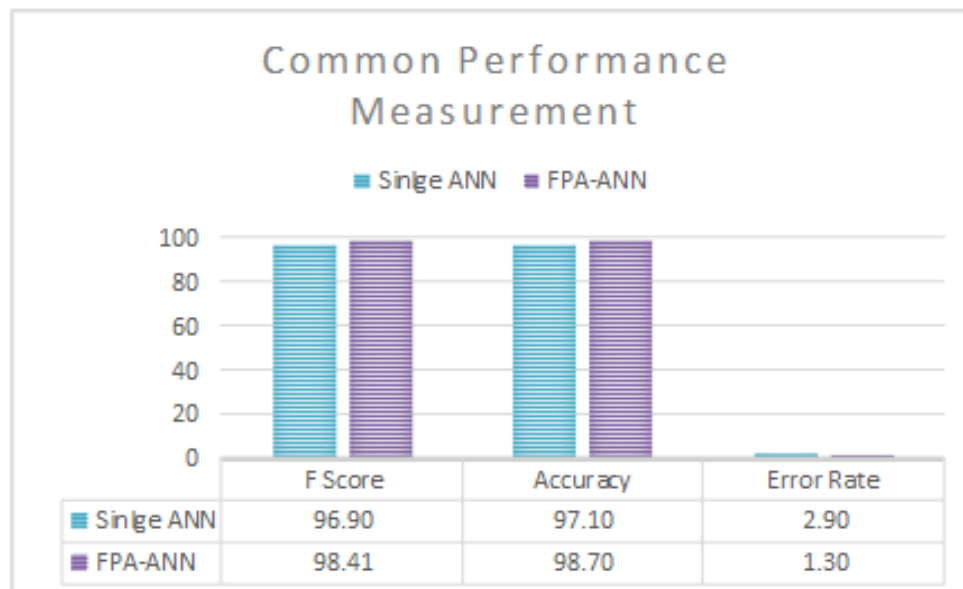


Fig. 7. Comparison of proposed FPA-ANN and single ANN in term of F-Score, Accuracy and Error Rate

6. Conclusions

This paper presents the development and evaluation of a hybrid Flower Pollination Algorithm-Artificial Neural Network (FPA-ANN) classification model for handwritten character recognition. The goal is to enhance the performance of the ANN using the metaheuristic approach, the FPA. The development of the hybrid FPA-ANN model consists of three main processes, which are outlined in an algorithm comprising thirteen steps. These processes involve optimizing the network's learning process through the FPA, which modifies the weights of interconnections to minimize the network's error and improve its performance in recognizing handwritten characters. In the evaluation phase, the proposed hybrid FPA-ANN model is compared to a single ANN in terms of several performance metrics, including precision, sensitivity, specificity, F-score, and accuracy. The results demonstrate that the hybrid FPA-ANN model achieves a 1.59 percent improvement in accuracy compared to the single ANN model.

As a significant contribution, this paper highlights the enhancement of the ANN classification model through the optimized network learning process using the Flower Pollination Algorithm. The proposed hybrid FPA-ANN classification model demonstrates better performance in classifying handwritten characters, showing promising results for character recognition tasks.

Acknowledgement

This research work has been made possible through the support of Universiti Malaysia Pahang Grant: RDU223226. The authors would like to express their sincere gratitude to the Soft Computing and Optimization Research Group (SCORE) for their valuable support throughout the research process. Their support and contribution have been instrumental in the successful development and evaluation of the proposed hybrid FPA-ANN classification model for handwritten character recognition.

References

- [1] Alqahtani, Abdulrahman Saad, A. Neela Madheswari, Azath Mubarakali, and P. Parthasarathy. "Secure communication and implementation of handwritten digit recognition using deep neural network." *Optical and Quantum Electronics* 55, no. 1 (2023): 27. <https://doi.org/10.1007/s11082-022-04290-7>
- [2] Ahmed, Syed Sohail, Zahid Mehmood, Imran Ahmad Awan, and Rehan Mehmood Yousaf. "A novel technique for handwritten digit recognition using deep learning." *Journal of Sensors* 2023, no. 1 (2023): 2753941. <https://doi.org/10.1155/2023/2753941>
- [3] Sudarchanan, M. S., and G. Sujana. "Handwritten Text Recognition Using Machine Learning and Deep Learning." In *2023 Eighth International Conference on Science Technology Engineering and Mathematics (ICONSTEM)*, pp. 1-4. IEEE, 2023.
- [4] Kumari, Tanuja, Yatharth Vardan, Prashant Giridhar Shambharkar, and Yash Gandhi. "Comparative Study on Handwritten Digit Recognition Classifier Using CNN and Machine Learning Algorithms." In *2022 6th International Conference on Computing Methodologies and Communication (ICCMC)*, pp. 882-888. IEEE, 2022. <https://doi.org/10.1109/ICCMC53470.2022.9753756>
- [5] Patel, Monica, and Shital P. Thakkar. "Handwritten character recognition in english: a survey." *International Journal of Advanced Research in Computer and Communication Engineering* 4, no. 2 (2015): 345-350. <https://doi.org/10.17148/IJARCC.2015.4278>
- [6] Mohamad, Muhammad'Arif, Haswadi Hassan, Dewi Nasien, and Habibollah Haron. "A review on feature extraction and feature selection for handwritten character recognition." *International Journal of Advanced Computer Science and Applications* 6, no. 2 (2015). <https://doi.org/10.14569/IJACSA.2015.060230>
- [7] Matsumoto, Kaoru, Takahiro Fukushima, and Masaki Nakagawa. "Collection and analysis of on-line handwritten Japanese character patterns." In *Proceedings of Sixth International Conference on Document Analysis and Recognition*, pp. 496-500. IEEE, 2001.
- [8] Mohamad, Muhammad A., Habibollah Haron, and Haswadi Hasan. "Metaheuristic optimization on conventional freeman chain code extraction algorithm for handwritten character recognition." In *Intelligent Information and*

- Database Systems: 9th Asian Conference, ACIIDS 2017, Kanazawa, Japan, April 3-5, 2017, Proceedings, Part I 9*, pp. 518-527. Springer International Publishing, 2017. https://doi.org/10.1007/978-3-319-54472-4_49
- [9] Mohamad, Muhammad Arif, Jamaludin Sallim, and Kohbalan Moorthy. "Whale Optimisation Freeman Chain Code (WO-FCC) Extraction Algorithm for Handwritten Character Recognition." In *2021 International Conference on Software Engineering & Computer Systems and 4th International Conference on Computational Science and Information Management (ICSECS-ICOCSIM)*, pp. 598-602. IEEE, 2021. <https://doi.org/10.1109/ICSECS52883.2021.00115>
- [10] Mohamad, Muhammad Arif, Habibollah Haron, and Haswadi Hasan. "Feature Vector-Based Artificial Neural Network Classification Model for Handwritten Character Recognition." In *New Trends in Intelligent Software Methodologies, Tools and Techniques*, pp. 409-422. IOS Press, 2018.
- [11] Yang, Xin-She. "Flower pollination algorithm for global optimization." In *International conference on unconventional computing and natural computation*, pp. 240-249. Berlin, Heidelberg: Springer Berlin Heidelberg, 2012. https://doi.org/10.1007/978-3-642-32894-7_27
- [12] Alyasseri, Zaid Abdi Alkareem, Ahamad Tajudin Khader, Mohammed Azmi Al-Betar, Mohammed A. Awadallah, and Xin-She Yang. "Variants of the flower pollination algorithm: a review." *Nature-inspired algorithms and applied optimization* (2018): 91-118. https://doi.org/10.1007/978-3-319-67669-2_5
- [13] Bekdaş, Gebrail, Sinan Melih Nigdeli, and Xin-She Yang. "Sizing optimization of truss structures using flower pollination algorithm." *Applied Soft Computing* 37 (2015): 322-331. <https://doi.org/10.1016/j.asoc.2015.08.037>
- [14] Mergos, Panagiotis E., and Fotios Mantoglou. "Optimum design of reinforced concrete retaining walls with the flower pollination algorithm." *Structural and Multidisciplinary Optimization* 61, no. 2 (2020): 575-585. <https://doi.org/10.1007/s00158-019-02380-x>
- [15] Al Smin, Ahmed Moh A., Alkibir Munir Faraj Almbrouk, Sairul Izwan Safie, Mohd Al Fatihhi Mohd Szali Januddi, Mohd Fahmi Hussin, and Abdulgader Alsharif. "Enhancing solar hybrid system efficiency in Libya through PSO & flower pollination optimization." *Progress in Energy and Environment* (2024): 23-31. <https://doi.org/10.37934/progee.27.1.2331>
- [16] Omar, Mohd Faizal, Noorhadila Mohd Bakeri, Mohd Nasrun Mohd Nawi, Norfazlirda Hairani, and Khalizul Khalid. "Methodology for modified whale optimization algorithm for solving appliances scheduling problem." *Journal of Advanced Research in Fluid Mechanics and Thermal Sciences* 76, no. 2 (2020): 132-143. <https://doi.org/10.37934/arfmts.76.2.132143>
- [17] Emary, Eid, Hossam M. Zawbaa, Aboul Ella Hassanien, and Bazil Parv. "Multi-objective retinal vessel localization using flower pollination search algorithm with pattern search." *Advances in data analysis and classification* 11 (2017): 611-627. <https://doi.org/10.1007/s11634-016-0257-7>
- [18] Ouadfel, Salima, and Abdelmalik Taleb-Ahmed. "Social spiders optimization and flower pollination algorithm for multilevel image thresholding: a performance study." *Expert Systems with Applications* 55 (2016): 566-584. <https://doi.org/10.1016/j.eswa.2016.02.024>
- [19] Abdelaziz, A. Y., E. S. Ali, and S. M. Abd Elazim. "Combined economic and emission dispatch solution using flower pollination algorithm." *International Journal of Electrical Power & Energy Systems* 80 (2016): 264-274. <https://doi.org/10.1016/j.ijepes.2015.11.093>
- [20] Abdelaziz, Almoataz Y., Ehab S. Ali, and S. M. Abd Elazim. "Implementation of flower pollination algorithm for solving economic load dispatch and combined economic emission dispatch problems in power systems." *Energy* 101 (2016): 506-518. <https://doi.org/10.1016/j.energy.2016.02.041>
- [21] Nigdeli, Sinan Melih, Gebrail Bekdaş, and Xin-She Yang. "Application of the flower pollination algorithm in structural engineering." *Metaheuristics and optimization in civil engineering* (2016): 25-42. https://doi.org/10.1007/978-3-319-26245-1_2
- [22] Mergos, Panagiotis E., and Fotios Mantoglou. "Optimum design of reinforced concrete retaining walls with the flower pollination algorithm." *Structural and Multidisciplinary Optimization* 61, no. 2 (2020): 575-585. <https://doi.org/10.1007/s00158-019-02380-x>
- [23] Yücel, Melda, Gebrail Bekdaş, Sinan Melih Nigdeli, and Aylin Ece Kayabekir. "An artificial intelligence-based prediction model for optimum design variables of reinforced concrete retaining walls." *International Journal of Geomechanics* 21, no. 12 (2021): 04021244. [https://doi.org/10.1061/\(ASCE\)GM.1943-5622.0002234](https://doi.org/10.1061/(ASCE)GM.1943-5622.0002234)
- [24] Singh, Jayraj, Ravishankar Kumar, and Haider Banka. "Application of flower pollination algorithm to locate critical failure surface for slope stability analysis." *Machine Learning Algorithms for Industrial Applications* (2021): 301-315. https://doi.org/10.1007/978-3-030-50641-4_17
- [25] Öcal, A. R. D. A., Yılmaz Emre Sarıççek, and Onur Pekcan. "Flower pollination algorithm for slope stability analysis." *Applications of flower pollination algorithm and its variants* (2021): 87-111. https://doi.org/10.1007/978-981-33-6104-1_5

- [26] Hisham, Sri Dewi, Shaza Eva Mohamad, Mohd Ibrahim Shapiai, Koji Iwamoto, Aimi Alina Hussin, Norhayati Abdullah, and Fazrena Nadia Md Akhir. "Comparison of Conventional CNN Sequential API and Functional API for Microalgae Identification." *Journal of Advanced Research in Micro and Nano Engineering* 17, no. 1 (2024): 96-104. <https://doi.org/10.37934/armne.17.1.96104>
- [27] Huy, Truong Hoang Bao, Perumal Nallagownden, Ramani Kannan, and Vo NgocDieu. "Energetic optimization of solar water heating system with flat plate collector using search group algorithm." *Journal of Advanced Research in Fluid Mechanics and Thermal Sciences* 61, no. 2 (2019): 306-322.